

NOTE:
EXISTING WINDOWS
Refer to conservation architects report
and window schedule.

Remove later non-original windows.
Remove external blind boxes.

INTERNAL DOORS

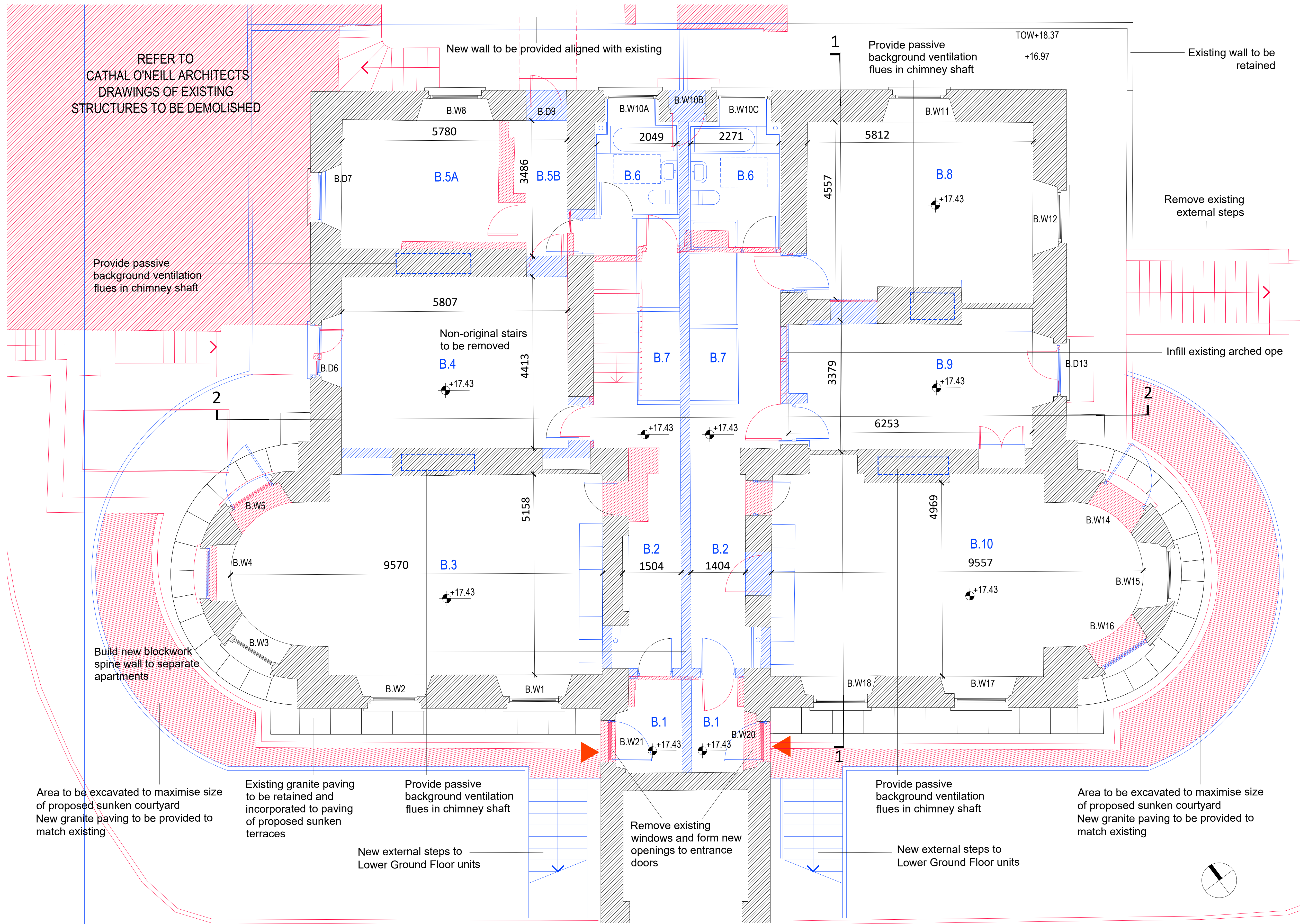
Refer to conservation architects report
for reference to existing doors.

CEILINGS

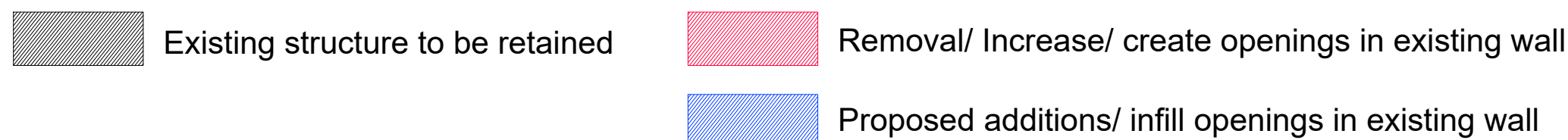
Refer to conservation architects report
for reference to existing ceilings.

FLOOR SLAB:

Construct new concrete floor slab on radon barrier on insulation to detail.

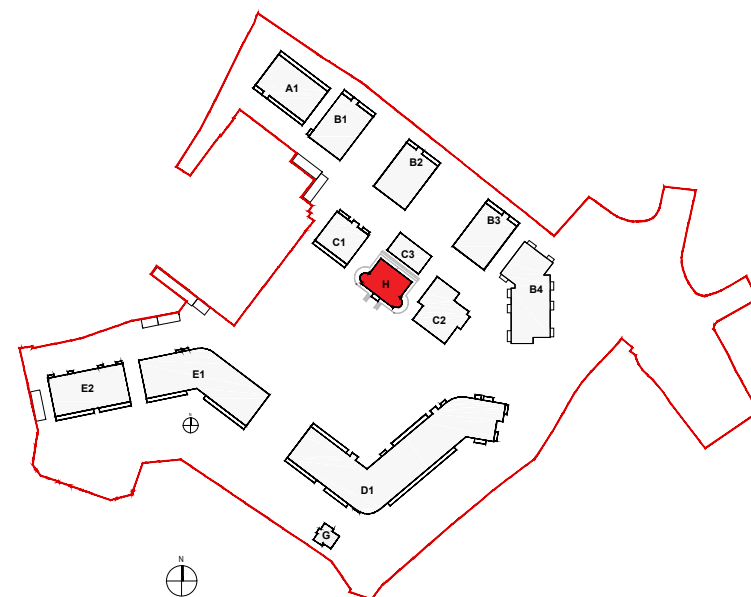


ADDITIONS AND REMOVALS_ LOWER GROUND FLOOR PLAN



NOTE:

- ORIGINAL SURVEY INFORMATION FROM MURPHY SURVEYS
- DRAWING ASSEMBLED BY OMP
- DRAWINGS TO BE READ IN CONJUNCTION WITH CONSERVATION ARCHITECTS REPORT

[illegible]

Figured dimensions only to be used. This drawing is copyright of O'Mahony Pike Architects Ltd. All information is shared as per approved use in accordance with BS1192(2007) + A2(2016), Table 5; Standard Codes for Suitability of Models and Documents. If 'Information Approval Check' is empty, this information has been shared at S0 - WIP.

o'mahony pike

architecture|urban design
email: info@omahonypike.com
tel: +353 1 202 7400
fax: +353 1 283 0822
www.omahonypike.com

Dublin
The Chapel
Mount St. Anne's
Milltown, Dublin 6
D06 XN52 Ireland

Cork
26 South Mal
Cork City
Co. Cork
T12 R2RV Irel

Project No.: 1706A

Scale @ A1: 1:50

Project Lead: DM

Date Printed: 17.12.2021

Drawn By: CE/CPI

Current Rev :

Model No.: 1706A-OMP-PS01-00-DB-A-1110

Purpose: PLANNING

Project: Proposed SHD
Location: Lands at 'St. T
Client: Oval Target Lin

Drawing Title: Additions & Removals Lower Ground Floor Plan - St. Teresa's House

Drawing No.: 1706A-OMP-PS01-GF-DR-A-1110

Suitability - Checked By - Date